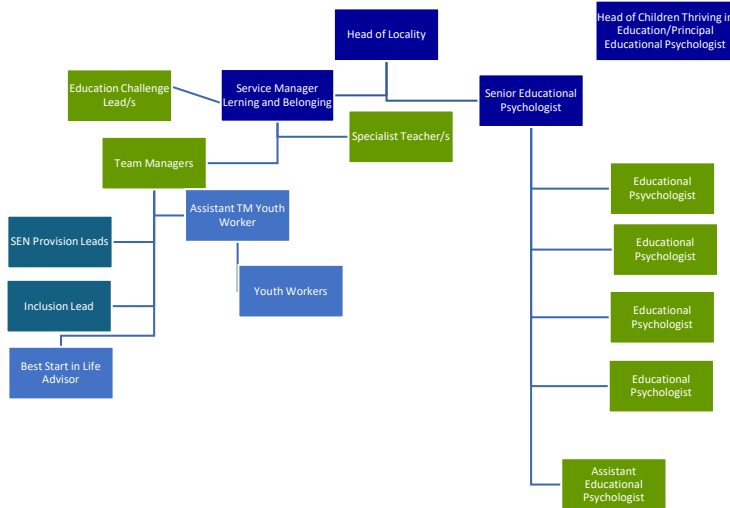


# Context statement

Job title: Senior Educational Psychologist  
 Directorate/Service/Team: Children's Services – Learning and Belonging

## Organisation structure



## Context of the Work

The Senior Educational Psychologist will have the core role to supervise and manage the locality team of educational psychologists, assistant educational psychologists and specialist teachers. The SEP will coordinate the work of the educational psychologists within a locality in line with the work of other Learning and Belonging professionals.

This post has line management responsibilities and will take a lead on effective and efficient practice of the educational psychologists (EPs) and Specialist Teachers (STs) to improve outcomes for specific groups of children and young people and their families within a locality area.

They will be responsible for reporting on performance and practice of the EPs to ensure we know the impact of their work. The postholder may be asked to line manage other colleagues in line with the leadership of the Principal Educational Psychologist.

The postholder will contribute to the leadership team within a locality and work with the Head of the Locality and Strategy and other leadership colleagues in the respective locality to ensure services are delivered seamlessly and adhere to professional standards and practice. In addition to leading on strategic priorities within the locality the senior educational psychologist will lead on strategic priorities for the directorate in line with the Children and



Young People's plan alongside the Principal Educational Psychologist. Senior educational psychologists will have an outward facing role with our partner agencies to develop working practices and support the development of the wider workforce. This will include leading on network meetings and specific workstreams that are a priority for the locality and Dorset Council to implement strategic plans.

The Senior Educational Psychologist will assist the Principal Educational Psychologist and other Senior Manager(s) within the directorate in the operational management of services and strategic planning and implementation. This could include the implementation of policies, strategies and projects in aiming to achieve service specific outcomes.

### Service Information

Dorset Council Educational Psychology Service is a dedicated team of psychologists committed to enabling children and young people in Dorset to attend their local educational settings to:

- ♥ Enjoy friendships and feel a sense of belonging
- ♥ Feel pride in their learning and achievements
- ♥ Feel noticed, accepted and valued for who they are
- ♥ Feel seen, safe, soothed and secure

### Through our practice we demonstrate our values:

1 Relationships	2 Hope	3 Curiosity	4 Diversity	5 Creativity
-----------------	--------	-------------	-------------	--------------

Strengths-based, person-centred and trauma-informed principles are foundation to our service delivery and approach.

### We provide core services to educational settings in Dorset:

- **Consultation:** A link educational psychologist (EP) for every school and college setting and at least two joint planning meetings during the academic year to allow problem-solving and reviewing the application of the graduated approach.
- **Psychological assessments:** gathering of information about a child's or young person's needs and how best to help them including Psychological Advice towards Education Health and Care Need Assessments and tribunal work. This is a statutory duty.
- **Interventions** including Critical Incident support for schools and children's services, and bereavement.
- **Guidance** around children / young people with an EHCP
- **Training and support** including coaching and professional supervision to implement whole-school relational approaches such as Therapeutic Thinking, Autism, Emotional Based School Avoidance and Relational Practice.



- **Resources** including practitioner Toolkit for responding to EBSA and One Page Summaries to support the graduated approach to SEND
- **Supervision** and support for school staff working in LA commissioned Inclusion Hubs
- **Multi agency work** – leading and / or participating in a range of multi-agency panels and child centred planning meetings.
- **Strategic work** - supporting schools and the local authority to improve children's emotional wellbeing and experiences of learning.
- **Network meetings to develop communities of practice, for SENDCos** (once per term), **Relational Practice/Therapeutic Thinking** network meeting (once a half-term) and **Senior Mental Health Leads** network meeting (once a term)

Commented [ML1]: Could we add other Network meetings such as relational practice, senior mental health lead?

The Educational Psychology Service delivers a core service providing psychological advice for children and young people as part of an Education, Health and Care Needs assessment, solution focused consultation to improve outcomes for children and young people with vulnerabilities, and psychological frameworks to multidisciplinary working practices.

The purpose of the Educational Psychology Service is to apply psychology to identify barriers to a child or young person developing and learning and to collaborate with key adults to overcome these drawing on research and evidence-based practice. The Educational Psychology Service adheres to quality standards and expects all educational psychologists to comply with HCPC registration and must understand the theoretical basis of, and the variety of approaches to, consultation and assessment in educational psychology.

### Our Mission

Our priorities to improve the outcomes for children and young people in Dorset are:

- 1 Best Start in Life
- 2 Young and Thriving
- 3 Good Care Provision
- 4 Best Education for All
- 5 Local Family Help (Delivering Locally)
- 6 Best Place to Live
- 7 Safe at Home and in the Community

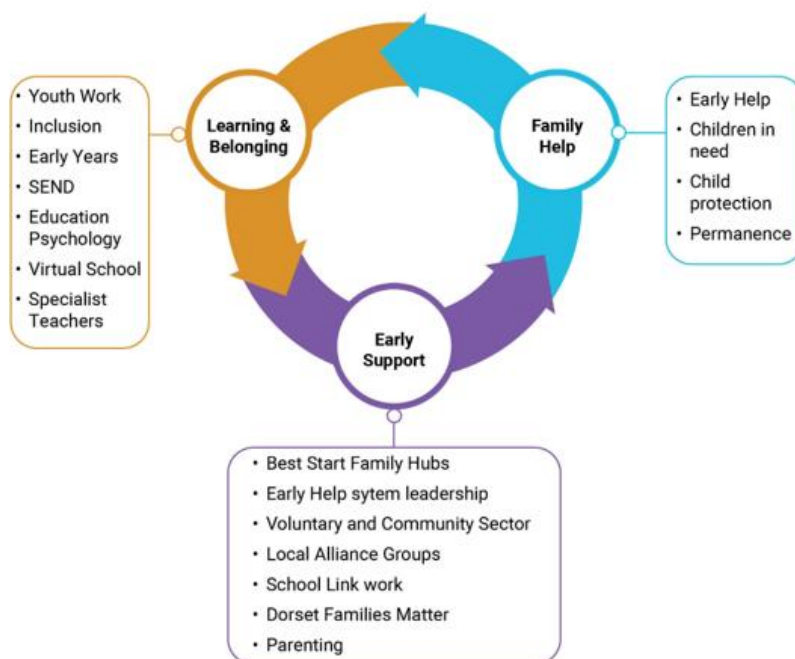
The locality teams bring together colleagues from across Early Help, Children's Social Care, Educational Psychology, SEND and Inclusion services under the leadership of Heads of Locality and Strategy who also have Portfolio leadership responsibility for: Family Help, Early Support, Safeguarding, Permanence and Learning and Belonging.

Through our integrated structure, colleagues work in multi-disciplinary integrated teams with a line managers and Service Managers for their locality. Our model supports the



Locality Teams with a central team of specialist services and strategic oversight to include Quality Assurance and Safeguarding and Performance and Governance.

Matrix management ensures colleagues have access to the specialist support they need. in their roles.



### Travel requirement

This position has a significant travel requirement. This means that there is a requirement for a vehicle (or transport deemed to be suitable by the Council) to be available on most working days in order to carry out normal duties. Employees in positions with a significant travel requirement are required to provide a replacement vehicle if their usual vehicle is not available over an extended period.

### Other information

The postholder will require to work evenings and weekends as required to deliver marketing and training events.

