

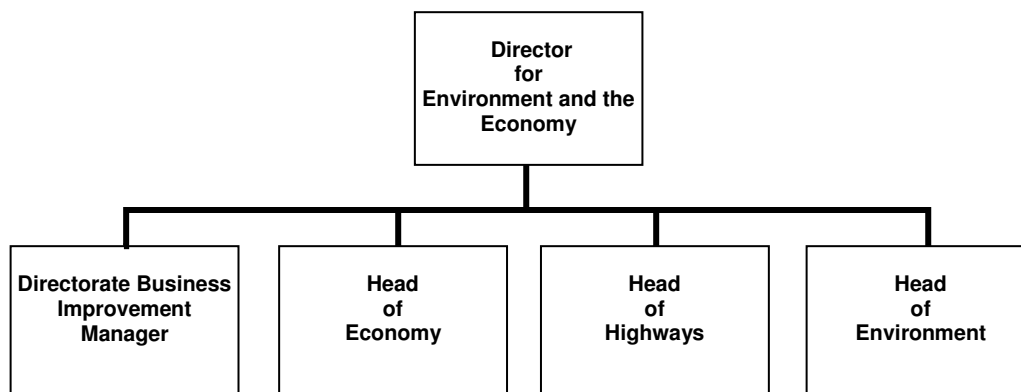
Job title:	Engineer (Development Liaison)
Directorate:	Environment and the Economy
Service / Team:	Economy: Transportation Modelling
Location:	County Hall
Reports to (designation):	Transport Development Liaison Manager
Grade:	9-11
Generic JD/PS Link:	ES587e – Senior Technical Officer (Level 1) ES587f – Senior Technical Officer (Level 2) ES610 – Senior Technical Officer (Level 3)

Introduction

This document has been compiled to supplement the Job Description and Person Specification to provide the current Corporate and Directorate context.

Organisation Structure

The Director for Environment and the Economy reports to the Chief Executive and is a member of the Corporate Leadership Team.



The Environment & the Economy Directorate contributes to Dorset County Council's Corporate Plan objectives in respect of both people and place, but with a leading role in place-shaping and creating the climate in which communities in Dorset can be strong and successful. The distinct but related contributions which the three services within the Directorate make to this overarching aim are:

- Economy – creating conditions for growth
- Environment – harnessing the benefits of and improving Dorset's environment
- Highways – keeping Dorset moving
- Business Improvement – helping the Directorate to deliver new ways of working

Economy Service Information

Within the Environment & Economy Directorate, the Economy Service provides front line services administering a variety of statutory functions and delivering on DCC's key corporate aims. It also has a wider role in providing the necessary business support services to the whole directorate. The purpose of the Economy Division is to enable the delivery of a thriving, productive economy while at the same time providing services to maintain the wellbeing of the whole community. Much of this work is carried out in partnership with others who share DCC's aims. The Economy Service has four service areas:

- **Economy, Planning and Transport**
- **Dorset Travel Team**
- **Business Support**
- **Superfast Dorset**

Context of the work

The Transportation Modelling Team sits within the **Economy, Planning and Transport** service area. The Economy, Planning and Transport service is responsible for promoting the principles and practice of sustainability in Dorset County Council and across the County. It develops and implements economic development strategies, plans for and regulates minerals and waste developments and prepares and implements transport strategies and provides the formal views of the Highway Authority as statutory consultee on planning applications. The service protects and improves Dorset's environment and improves the accessibility of rural communities and the delivery of services. The service develops and maintains the County Council's external relations and promotes Dorset's interests at sub-regional, national and European levels.

The **Transportation Modelling Team** support a wide range of internal and external clients by undertaking a full range of transport studies and through its role as Highway Authority manage the impact of development on transport infrastructure.

The team collect transport data, maintain databases, create and develop transport models and undertake forecasting and economic analysis of schemes. The team are responsible for organising surveys on the highway network, liaison with the Police and other agencies and recording the results. This data is used to keep up to date transportation models and forms the basis of the design of highway improvements and the assessment of development proposals. The survey and modelling work can range from small scale localised projects to assessing the complex interaction of journeys across the whole South East Dorset conurbation. Importantly the output provides evidence for developing business cases to underpin funding bids, scheme prioritisation and the making and assessment of planning applications. It is also necessary to support public enquiries and appeals.

In its role as Highway Authority and statutory consultee, the team assess all significant planning applications making recommendations to the planning authority on highway, transport and safety implications of the development and where appropriate sets out requirements and conditions to makes proposals acceptable. It also provides comments and where necessary objections to the Traffic Commissioners on HGV Operator Licence applications. The team produces highways design guidance, formulates and furthers good urban design principles and practice and carries out master planning of significant sites.

The team comprises eleven permanent officers reporting to the team leader. Two engineers are engaged in modelling work supported by two career grade senior technicians and two career grade assistant technician/technicians working on data collection. In addition a range of temporary enumerators carry out survey work on their behalf. A team of four engineers and a manager exercise the Authority's role as Highway Authority commenting on development proposals.

4 X Engineer (Development Liaison): The Engineer (Development Liaison) is one of four similar career grade posts. It comprises three levels. At a Senior/Level 3 the post holder has responsibility, as the Highway Authority, for assessing and making recommendations on planning applications, transport assessments and pre-planning enquiries and for ensuring the delivery of

transportation infrastructure and services arising from new development. The post holder will work closely with local planning authorities, Parish Councils and other partners and will also be expected to represent the Authority at meetings, Committee meetings and other fora. This will include defending their professional advice at Appeals and Inquiries. In addition the post holder may be required to produce and promote design guidance, master plans, travel plans and assist other team members with work on Local Plans. At levels 1 and 2 responsibilities are broadly similar to the Senior Engineer but the level of supervision and training will increase. Post holders will be expected to prepare but not necessarily give evidence at appeals and inquiries.

ADDITIONAL INFORMATION

ESThe following specific qualifications and experience are required:

- At level 1 the post holder will be expected to enter the career grade with a BTEC Higher National Certificate (HNC/HND) or equivalent
- At level 2 the post holder is expected to be working towards Incorporated Engineer status or equivalent
- At level 3 the post holder is expected to be an Incorporated Engineer or to have a masters degree in transport or a related discipline or equivalent

Travel Requirement

This role will involve the requirement to travel on a regular basis.

This context statement has been prepared and will be maintained by the service

Context Statement prepared by:	Maxine Bodell		
Designation:	Economy, Planning and Transport Service Manager	Date:	March 2015